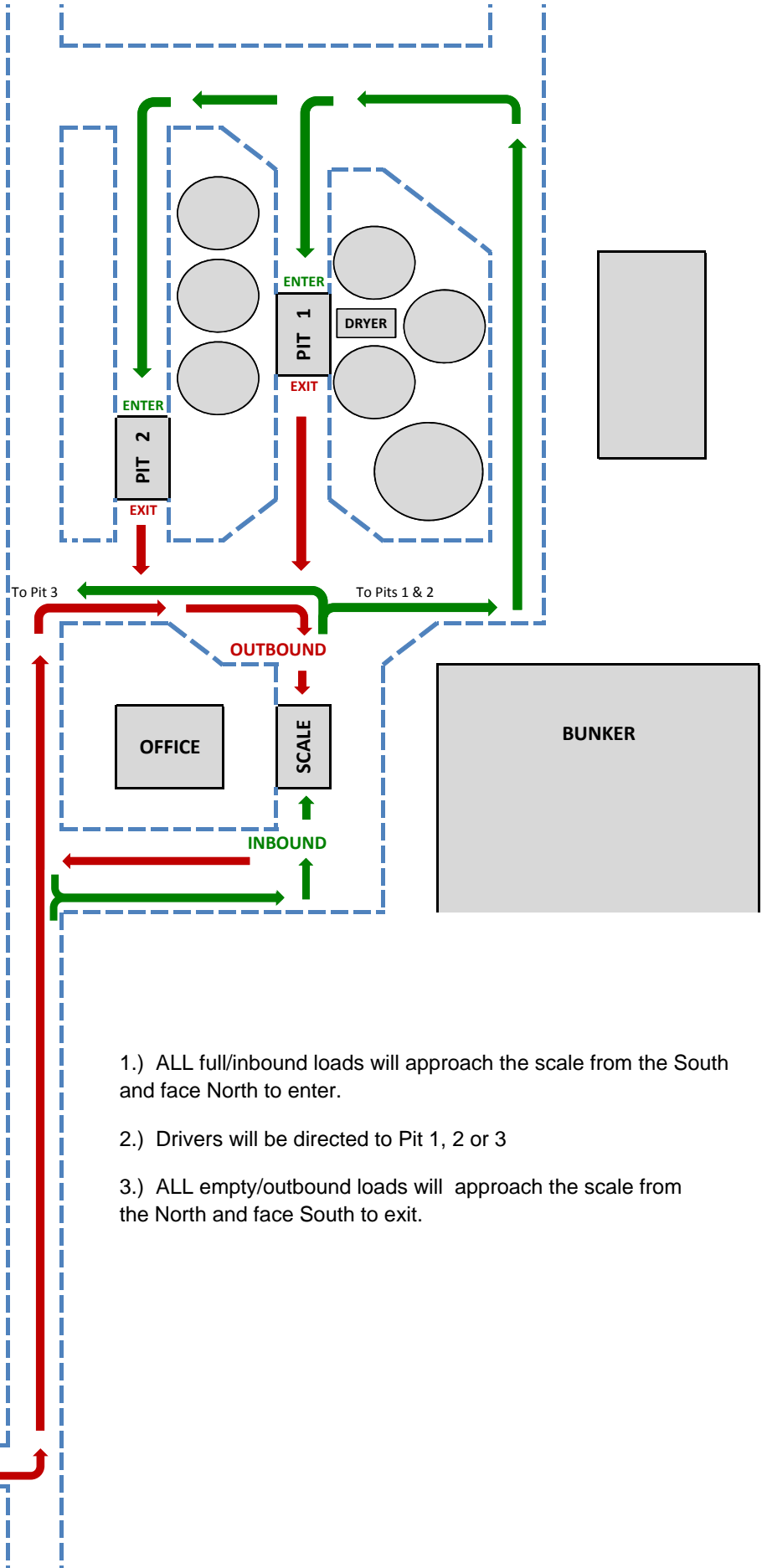
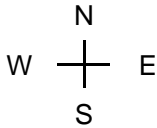


Alliance Grain. Co.

Campus Facility Traffic Map
Updated September 2009

For questions, contact the
Campus office at (815) 567-3311



- 1.) ALL full/inbound loads will approach the scale from the South and face North to enter.
- 2.) Drivers will be directed to Pit 1, 2 or 3
- 3.) ALL empty/outbound loads will approach the scale from the North and face South to exit.